



REGIONAL IMPACT REPORT

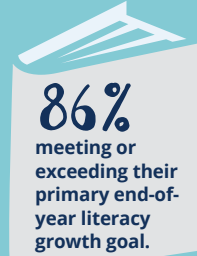
2018-19: Los Angeles Area

Student performance

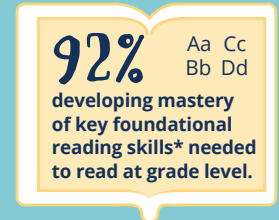


Reading Partners students are performing well overall and our youngest students continue to show impressive progress in the critical early years.

All Reading Partners students

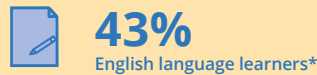


K-2 Reading Partners students



*We track growth in the key foundational literacy skills students need to become independent readers, such as alphabetic principle, phonics, and vocabulary.

By the numbers



*ELL percentage calculated using 2018-19 student-level data; economically disadvantaged percentage calculated using 2017-18 school-level FRL data.



Program highlights



93%
OF PRINCIPALS
report improved school-wide reading progress.*

100%
OF TEACHERS
report Reading Partners is valuable to their school.*

96%
OF VOLUNTEERS
are satisfied with their volunteer experience.*

*Among respondents of 2018-19 surveys

An evidence-based program that works

mdrc
BUILDING KNOWLEDGE TO IMPROVE SOCIAL POLICY
Gold-standard research found Reading Partners' program had a positive and statistically significant impact on student reading proficiency, leading to acceptance into the Institute of Education Sciences What Works Clearinghouse.

APA
AUGENBLICK, PALAICH AND ASSOCIATES
A respected national education research firm found that students served by Reading Partners (and particularly English Language Learners) showed significantly greater improvement in their literacy skills than comparison students not served by the program.

Child TRENDS
A leading national nonprofit research organization found that students who participated in Reading Partners' one-on-one tutoring program not only showed gains in their reading skills, but also made improvements in their social-emotional learning skills.

