



REGIONAL IMPACT REPORT

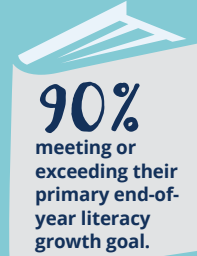
2018-19: North Texas

Student performance

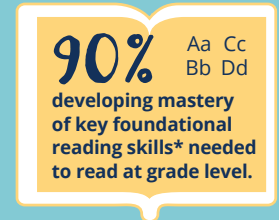


Reading Partners students are performing well overall and our youngest students continue to show impressive progress in the critical early years.

All Reading Partners students



K-2 Reading Partners students



*We track growth in the key foundational literacy skills students need to become independent readers, such as alphabetic principle, phonics, and vocabulary.

By the numbers

766 students served

711 community tutors

88% economically disadvantaged students*

25,903 tutoring sessions

24% English language learners*

34 average sessions per student

19 partner schools

*ELL percentage calculated using 2018-19 student-level data; economically disadvantaged percentage calculated using most recent school-level low-SES/economically disadvantaged data.



Program highlights



100% OF PRINCIPALS report improved school-wide reading progress.*

100% OF TEACHERS report Reading Partners is valuable to their school.*

94% OF VOLUNTEERS are satisfied with their volunteer experience.*

*Among respondents of 2018-19 surveys

An evidence-based program that works

Gold-standard research found Reading Partners' program had a positive and statistically significant impact on student reading proficiency, leading to acceptance into the Institute of Education Sciences What Works Clearinghouse.

A respected national education research firm found that students served by Reading Partners (and particularly English Language Learners) showed significantly greater improvement in their literacy skills than comparison students not served by the program.

A leading national nonprofit research organization found that students who participated in Reading Partners' one-on-one tutoring program not only showed gains in their reading skills, but also made improvements in their social-emotional learning skills.

